



User Login Required for CONSULT III Plus Re/programming and Configuration

Reference: NPSB/17-003

Date: November 9, 2017

Attention: Service Directors and Service Managers

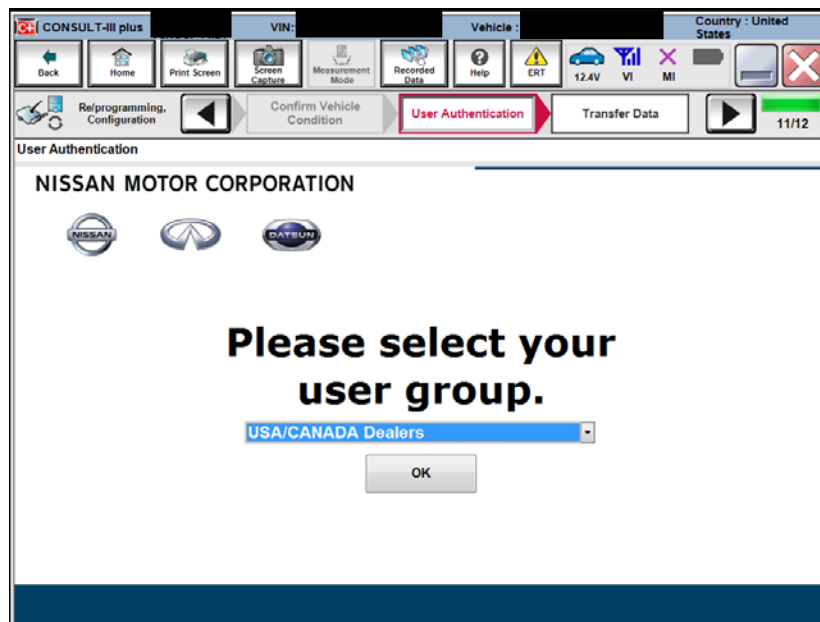
ANNOUNCEMENT

Beginning on November 13, 2017 with release of software version 73.1, technicians will be required to login with a username and password to perform ECU Re/programming and Configuration in CONSULT III Plus. The username and password required is the same one used for login to NNA.net.com. Each technician should currently have NNA.net.com login credentials distributed by the Service Manager. If needed, see your Service Manager for username and password assistance.

Note: Your CONSULT III Plus PC must be connect to the Internet via Wi-Fi or LAN cable.

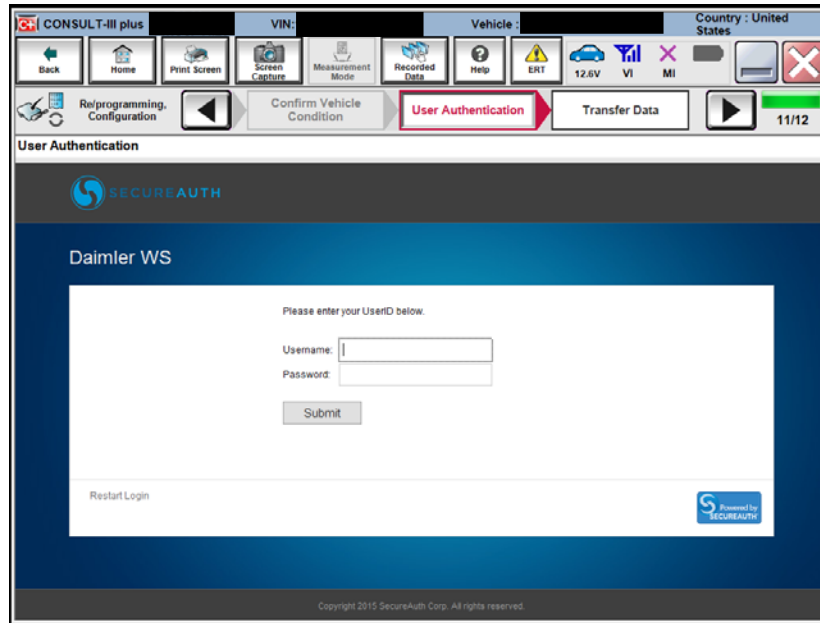
Proceed with your normal Re/programming and Configuration steps in CONSULT III Plus. The user authentication step will be displayed just prior to the Re/programming or Configuration data transfer. See screens below. Once your login has been verified, the Re/programming and Configuration will automatically begin.

Select USA/CANADA Dealers

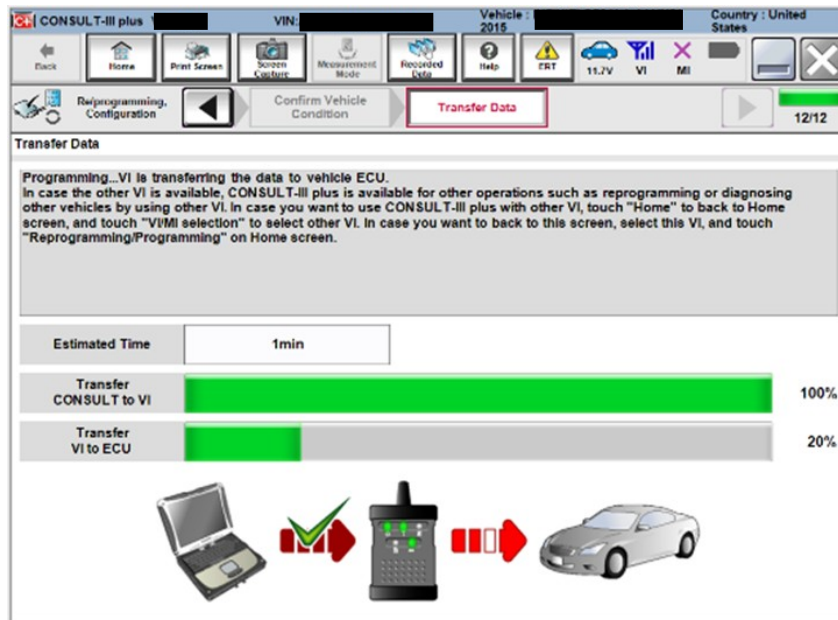




Input Username & Password



Example: Transfer of Data Begins After Login Verified



Dealer Support
Aftersales Division